

# LIGHTING LAYOUT

## NOTES

- 1) HEIGHT OF STREET LIGHTS SHALL BE 8m, ACCORDING TO LIGHTING CALCULATION.
- 2) HEIGHT OF LIGHTING TOWER SHALL BE 20 m, ACCORDING TO LIGHTING CALCULATION.
- 3) ELEVATION OF LUMINARIES ON BUILDING WALL ARE APPROXIMATE AND SHALL BE FINALIZED AT SITE.
- 4) AREA LIGHTING CABLES SHALL BE RUN ON CABLE LADDER WHERE POSSIBLE.
- 5) IN SITUATION WHERE CABLE LADDER CANNOT USE FOR CABLING, THE CABLES LIGHTING SHALL BE BURIED DIRECTLY GROUND WITH PVC CONDUIT.
- 6) DEPTH OF DIRECT BURIED CABLES SHALL BE 100 CM FFL.

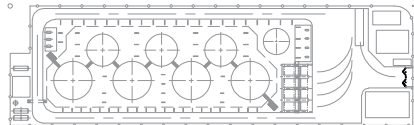
## REFERENCE DOCUMENT

- 1-POT-150-DE-EL-CAL-3127 - AREA LIGHTING CALCULATION
- 2-POT-150-BE-GE-PPL-1003 - GENERAL SITE PLAN

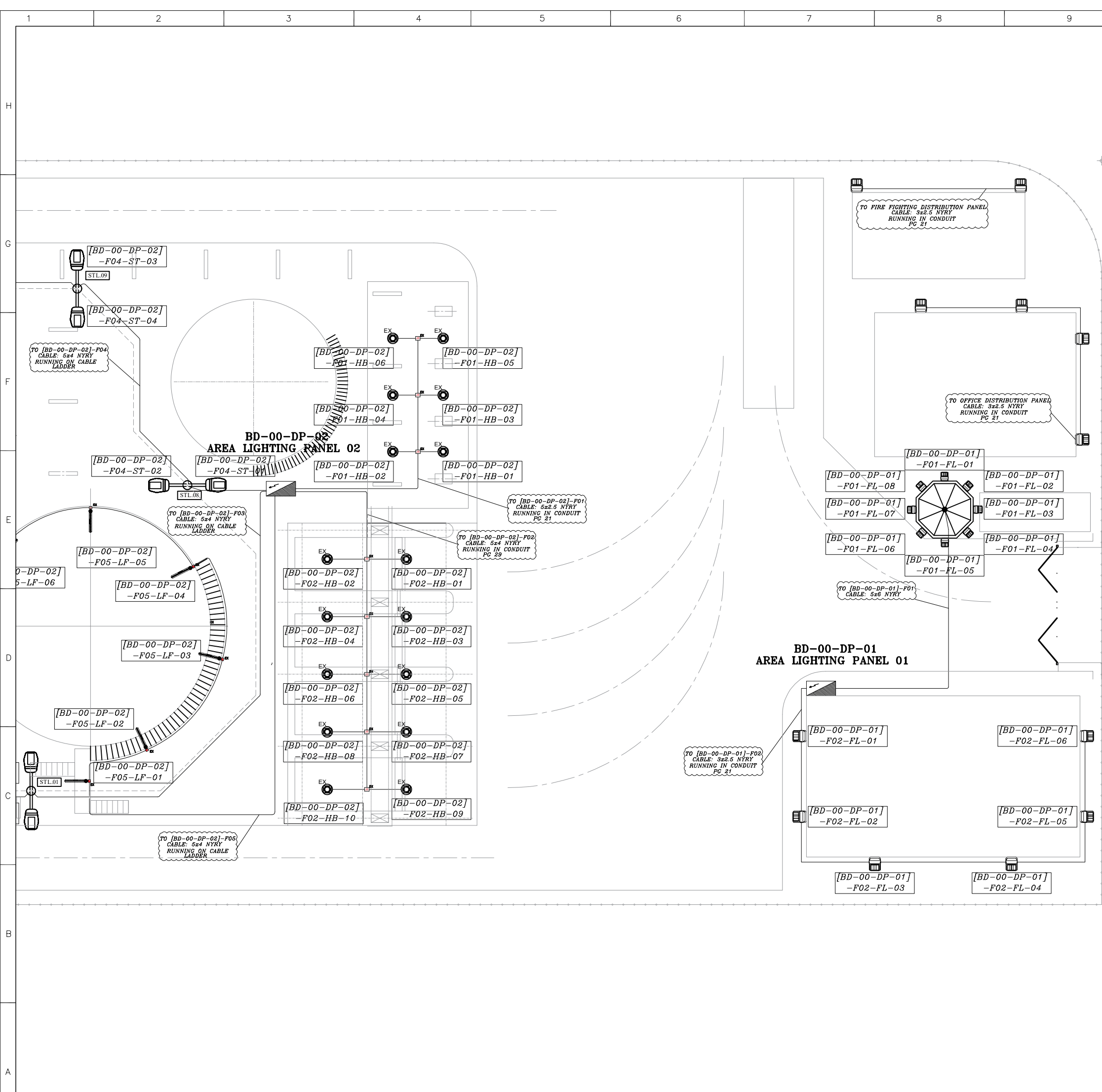
## SYMBOL & LEGEND

	ONE WAY STREET LIGHT WITH HELIUS L LUMINARY, LED TYPE, 250 WATT, GRAY BODY, Luminance flux 31000, IP55, CLEAR TEMPERED GLASS. LIGHTING POLE 8M WITH JB.
	LIGHTING TOWER WITH 20 M HEIGHT, EQUIPPED WITH 8 LED PROJECTOR, OPTILUX MODEL, 180WATT, GRAY BODY, IP 55, 25000 LUMEN.
	JUNCTION BOX, ALUMINUM DIE CAST
	EXPLOSION PROOF
	LED TYPE 38 WATT, DUST & MOISTURE PROOF LUMINAIRE, IP 55 RESISTANT TO SUNLIGHT, STAINLESS STEEL BODY.
	2x36 WATT, FLUORESCENT LAMP, EXPLOSION PROOF TYPE.
	Service box, two 1ph sockets with16A, one 3ph socket with 63A 63 A MCB as an incoming cb & two mcb 16A & one mcb 63A as outgoing cb
	LED PROJECTOR, OPTILUX MODEL, 180W, GRAY BODY, IP 55 RESISTANT TO SUNLIGHT, 25000 LUMAN.
	PENDANT LIGHTING, EXPLOSION PROOF, SUITABLE FOR ZONE 1, 11500 LUMAN, 150 WATT, EEx de IIC T4
	2 WAY STREET LIGHTS WITH ASTERIA M LUMINARY, LED TYPE, 120 WATT, GRAY BODY, Luminance flux 16000, IP55, CLEAR TEMPERED GLASS. LIGHTING POLE 3M WITH JB ON DIKE WALL.

## Plan



04	04/08/25	A.MADHIAN		R.RAZMI	R.RAZMI	APPROVE FOR CONSTRUCTION		
03	04/08/14	A.MADHIAN		R.RAZMI	R.RAZMI	APPROVE FOR CONSTRUCTION		
02	04/07/23	A.MADHIAN		R.RAZMI	R.RAZMI	ISSUED FOR APPROVAL		
01	04/05/27	A.MADHIAN		R.RAZMI	R.RAZMI	ISSUED FOR COMMENT		
00	03/12/12	A.MADHIAN		R.RAZMI	R.RAZMI	ISSUED FOR COMMENT		
REV.	DATE	DESIGN	DRAWN	CHECK	APP.	DESCRIPTION		
CLIENT			OWNER:		CONSULTANT:		SUPER VISOR:	
								
SCALE: NTS			SIZE:A3		PROJ. NO.:		1402-T-13800	
PROJ: PAYA OIL PRODUCT TERMINAL IN SHAHID RAJAEI PORT								
PREPARED BY: A.MADHIAN			TITLE: AREA LIGHTING AND SMALL POWER LAYOUT					
APPROVED BY: R.RAZMI								
CONT. No.	REF.	PROJ.	PH.	DISC.	TYPE.	SEQ.	REV.	SHEET NO.
12S/13800	POT	150	DE	EL	PPL	3116	04	02 OF 12



- NOTES
- 1) HEIGHT OF STREET LIGHTS SHALL BE 8m, ACCORDING TO LIGHTING CALCULATION.

2) HEIGHT OF LIGHTING TOWER SHALL BE 20 m, ACCORDING TO LIGHTING CALCULATION.

3) ELEVATION OF LUMINARIES ON BUILDING WALL ARE APPROXIMATE AND SHALL BE FINALIZED AT SITE.

4) AREA LIGHTING CABLES SHALL BE RUN ON CABLE LADDER WHERE POSSIBLE.

5) IN SITUATION WHERE CABLE LADDER CANNOT USE FOR CABLING, THE CABLES LIGHTING SHALL BE BURIED DIRECTLY GROUND WITH PVC CONDUIT.

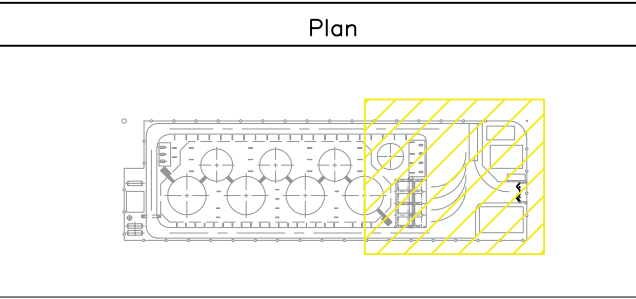
6) DEPTH OF DIRECT BURIED CABLES SHALL BE 100 CM FFL.

- REFERENCE DOCUMENT
- 1-POT-150-DE-EL-CAL-3127 - AREA LIGHTING CALCULATION

2-POT-150-BE-GE-PPL-1003 - GENERAL SITE PLAN

SYMBOL & LEGEND

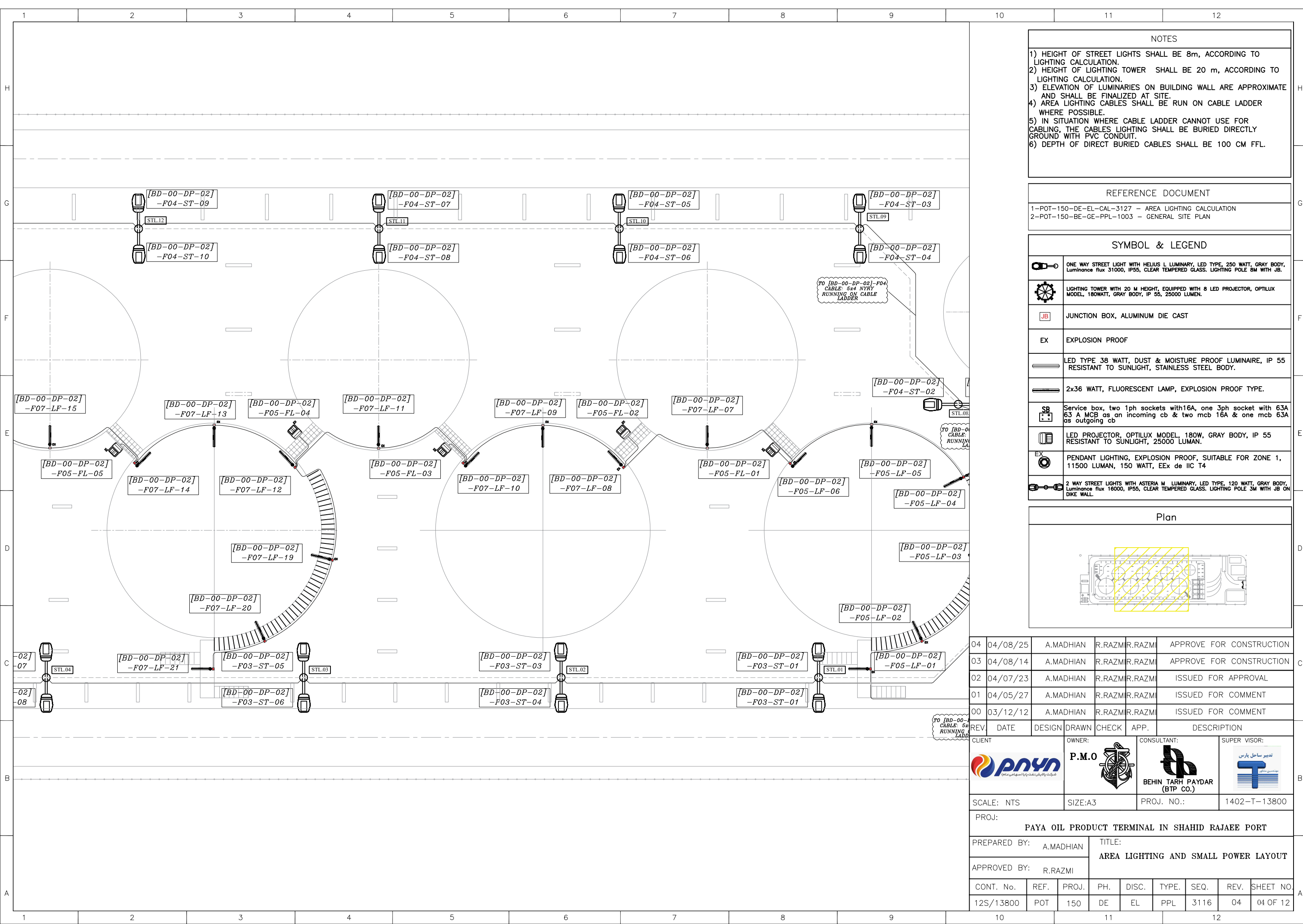
	ONE WAY STREET LIGHT WITH HELIUS L LUMINARY, LED TYPE, 250 WATT, GRAY BODY, Luminance flux 31000, IP55, CLEAR TEMPERED GLASS. LIGHTING POLE 8M WITH JB.
	LIGHTING TOWER WITH 20 M HEIGHT, EQUIPPED WITH 8 LED PROJECTOR, OPTILUX MODEL, 180WATT, GRAY BODY, IP 55, 25000 LUMEN.
	JUNCTION BOX, ALUMINUM DIE CAST
	EXPLOSION PROOF
	LED TYPE 38 WATT, DUST & MOISTURE PROOF LUMINAIRE, IP 55 RESISTANT TO SUNLIGHT, STAINLESS STEEL BODY.
	2x36 WATT, FLUORESCENT LAMP, EXPLOSION PROOF TYPE.
	Service box, two 1ph sockets with16A, one 3ph socket with 63A 63 A MCB as an incoming cb and two mcb 16A & one mcb 63A as outgoing cb
	LED PROJECTOR, OPTILUX MODEL, 180W, GRAY BODY, IP 55 RESISTANT TO SUNLIGHT, 25000 LUMAN.
	PENDANT LIGHTING, EXPLOSION PROOF, SUITABLE FOR ZONE 1, 11500 LUMAN, 150 WATT, EEx de IIC T4
	2 WAY STREET LIGHTS WITH ASTERIA M LUMINARY, LED TYPE, 120 WATT, GRAY BODY, Luminance flux 16000, IP55, CLEAR TEMPERED GLASS. LIGHTING POLE 3M WITH JB ON DIKE WALL.



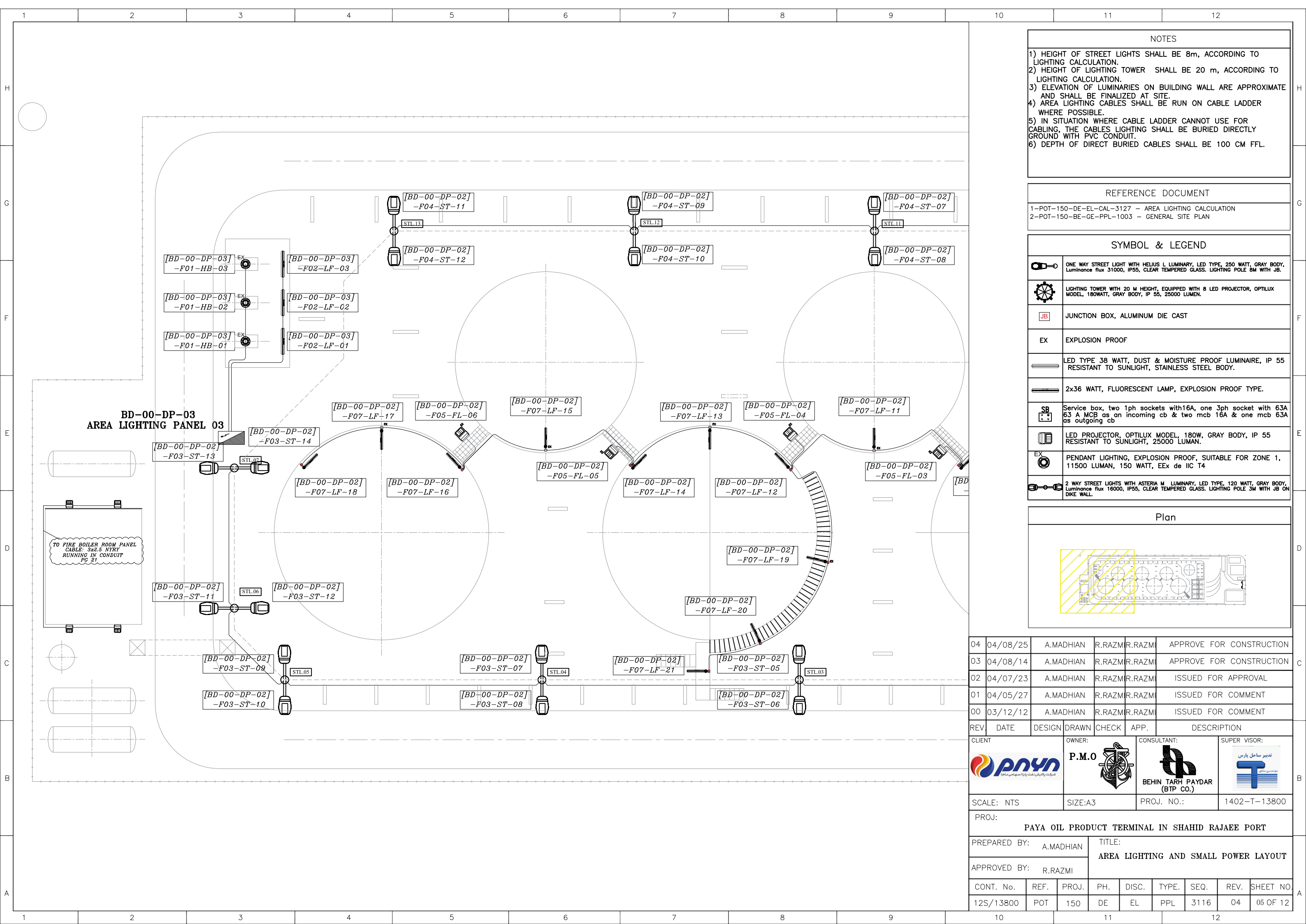
04	04/08/25	A.MADHIAN	R.RAZMI	R.RAZMI	APPROVE FOR CONSTRUCTION
03	04/08/14	A.MADHIAN	R.RAZMI	R.RAZMI	APPROVE FOR CONSTRUCTION
02	04/07/23	A.MADHIAN	R.RAZMI	R.RAZMI	ISSUED FOR APPROVAL
01	04/05/27	A.MADHIAN	R.RAZMI	R.RAZMI	ISSUED FOR COMMENT
00	03/12/12	A.MADHIAN	R.RAZMI	R.RAZMI	ISSUED FOR COMMENT

REV.	DATE	DESIGN	DRAWN	CHECK	APP.	DESCRIPTION
CLIENT	OWNER:		CONSULTANT:		SUPER VISOR:	
SCALE: NTS		SIZE:A3		PROJ. NO.:		1402-T-13800

PROJ:								
PAYA OIL PRODUCT TERMINAL IN SHAHID RAJAEI PORT								
PREPARED BY: A.MADHAN			TITLE: AREA LIGHTING AND SMALL POWER LAYOUT					
APPROVED BY: R.RAZMI								
CONT. No.	REF.	PROJ.	PH.	DISC.	TYPE.	SEQ.	REV.	SHEET NO
12S/13800	POT	150	DE	EL	PPL	3116	04	03 OF 12







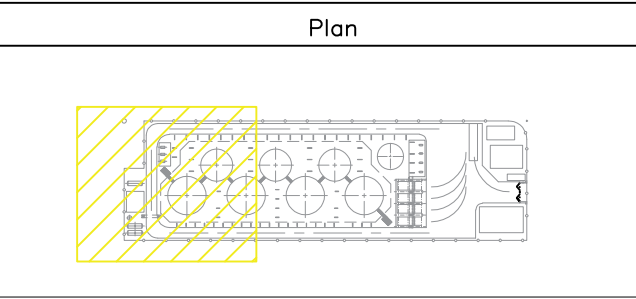
NOTES

1) HEIGHT OF STREET LIGHTS SHALL BE 8m, ACCORDING TO LIGHTING CALCULATION.  
2) HEIGHT OF LIGHTING TOWER SHALL BE 20 m, ACCORDING TO LIGHTING CALCULATION.  
3) ELEVATION OF LUMINARIES ON BUILDING WALL ARE APPROXIMATE AND SHALL BE FINALIZED AT SITE.  
4) AREA LIGHTING CABLES SHALL BE RUN ON CABLE LADDER WHERE POSSIBLE.  
5) IN SITUATION WHERE CABLE LADDER CANNOT USE FOR CABLING, THE CABLES LIGHTING SHALL BE BURIED DIRECTLY GROUND WITH PVC CONDUIT.  
6) DEPTH OF DIRECT BURIED CABLES SHALL BE 100 CM FFL.

REFERENCE DOCUMENT

1-POT-150-DE-EL-CAL-3127 - AREA LIGHTING CALCULATION  
2-POT-150-BE-GE-PPL-1003 - GENERAL SITE PLAN

SYMBOL & LEGEND	
	ONE WAY STREET LIGHT WITH HELIUS L LUMINARY, LED TYPE, 250 WATT, GRAY BODY, Luminance flux 31000, IP55, CLEAR TEMPERED GLASS. LIGHTING POLE 8M WITH JB.
	LIGHTING TOWER WITH 20 M HEIGHT, EQUIPPED WITH 8 LED PROJECTOR, OPTILUX MODEL, 180WATT, GRAY BODY, IP 55, 25000 LUMEN.
	JUNCTION BOX, ALUMINUM DIE CAST
	EXPLOSION PROOF
	LED TYPE 38 WATT, DUST & MOISTURE PROOF LUMINAIRE, IP 55 RESISTANT TO SUNLIGHT, STAINLESS STEEL BODY.
	2x36 WATT, FLUORESCENT LAMP, EXPLOSION PROOF TYPE.
	Service box, two 1ph sockets with16A, one 3ph socket with 63A 63 A MCB as an incoming cb & two mcb 16A & one mcb 63A as outgoing cb
	LED PROJECTOR, OPTILUX MODEL, 180W, GRAY BODY, IP 55 RESISTANT TO SUNLIGHT, 25000 LUMAN.
	PENDANT LIGHTING, EXPLOSION PROOF, SUITABLE FOR ZONE 1, 11500 LUMAN, 150 WATT, EEx de IIC T4
	2 WAY STREET LIGHTS WITH ASTERIA M LUMINARY, LED TYPE, 120 WATT, GRAY BODY, Luminance flux 16000, IP55, CLEAR TEMPERED GLASS. LIGHTING POLE 3M WITH JB ON DIKE WALL.



04	04/08/25	A.MADHIAN	R.RAZMI	R.RAZMI	APPROVE FOR CONSTRUCTION
03	04/08/14	A.MADHIAN	R.RAZMI	R.RAZMI	APPROVE FOR CONSTRUCTION
02	04/07/23	A.MADHIAN	R.RAZMI	R.RAZMI	ISSUED FOR APPROVAL
01	04/05/27	A.MADHIAN	R.RAZMI	R.RAZMI	ISSUED FOR COMMENT
00	03/12/12	A.MADHIAN	R.RAZMI	R.RAZMI	ISSUED FOR COMMENT

CLIENT

OWNER:

P.M.O

CONSULTANT:

SUPER VISOR:

SCALE: NTS

SIZE:A3

PROJ. NO.:

1402-T-13800

PROJ: PAYA OIL PRODUCT TERMINAL IN SHAHID RAJAEI PORT

PREPARED BY: A.MADHIAN  
APPROVED BY: R.RAZMI

TITLE: AREA LIGHTING AND SMALL POWER LAYOUT

CONT. No.	REF.	PROJ.	PH.	DISC.	TYPE.	SEQ.	REV.	SHEET NO.
12S/13800	POT	150	DE	EL	PPL	3116	04	05 OF 12



H

G

F

E

D

C

B

A

1

2

3

4

5

6

7

8

9

NO.

UNIT

Q'TY

DESCRIPTION

REMARK

1

m

AS REQ'D

HOT DIP GALVANIZED STEEL CONDUIT

2

EA

2

BUSHING

3

EA

1

PIPE CLAMP

4

EA

1

SELF DRILLING EXPANSION ANCHOR M8x30L

5

EA

5

CABLE GLAND, EARTH TAG & SHROUD

6

EA

1

SQUARE TYPE JUNCTION BOX

7

SET

1

H.D.G. STEEL POLE, #40mm

8

SET

1

SEALING COMPOUND

9

EA

1

RUBBER WASHER

NOTE

1. JUNCTION BOX BRACKET TO BE WELDED TO POLE BY VENDOR.

2. SELECTION OF ELECTRICAL MATERIAL IN ZONE 1 OR 2.

- LIGHTING FIXTURE : Ex d

- JUNCTION BOX : Ex d or e

1000

30°

3000

300

FINISHED DIKE WALL

5

8

9

7

5

6

EX

ARMOURED CABLE

SEE DETAIL "A"

SEE DETAIL "B"

DETAIL "A"

DETAIL "B"

1

2

3

4

5

6

7

1

2

3

4

5

6

7

FLUORESCENT FIXTURE FOR STORAGE TANK ARE AND STRAITS

1

2

3

4

5

6

7

1

2

3

4

5

6

7

1

2

3

4

5

6

7

FLUORESCENT FIXTURE FOR STORAGE TANK ARE AND STRAITS

1

2

3

4

5

6

7

NOTES

1) HEIGHT OF STREET LIGHTS SHALL BE 8m, ACCORDING TO LIGHTING CALCULATION.

2) HEIGHT OF LIGHTING TOWER SHALL BE 20 m, ACCORDING TO LIGHTING CALCULATION.

3) ELEVATION OF LUMINARIES ON BUILDING WALL ARE APPROXIMATE AND SHALL BE FINALIZED AT SITE.

4) AREA LIGHTING CABLES SHALL BE RUN ON CABLE LADDER WHERE POSSIBLE.

5) IN SITUATION WHERE CABLE LADDER CANNOT USE FOR CABLING, THE CABLES LIGHTING SHALL BE BURIED DIRECTLY GROUND WITH PVC CONDUIT.

6) DEPTH OF DIRECT BURIED CABLES SHALL BE 100 CM FFL.

REFERENCE DOCUMENT

1-POT-150-DE-EL-CAL-3127 - AREA LIGHTING CALCULATION

2-POT-150-BE-GE-PPL-1003 - GENERAL SITE PLAN

SYMBOL & LEGEND

ONE WAY STREET LIGHT WITH HELIUS L LUMINARY, LED TYPE, 250 WATT, GRAY BODY, Luminance flux 31000, IP55, CLEAR TEMPERED GLASS. LIGHTING POLE 8M WITH JB.

LIGHTING TOWER WITH 20 M HEIGHT, EQUIPPED WITH 8 LED PROJECTOR, OPTILUX MODEL, 180WATT, GRAY BODY, IP 55, 25000 LUMEN.

JUNCTION BOX, ALUMINUM DIE CAST

EXPLOSION PROOF

LED TYPE 38 WATT, DUST & MOISTURE PROOF LUMINAIRE, IP 55 RESISTANT TO SUNLIGHT, STAINLESS STEEL BODY.

2x36 WATT, FLUORESCENT LAMP, EXPLOSION PROOF TYPE.

Service box, two 1ph sockets with16A, one 3ph socket with 63A 63 A MCB as an incoming cb & two mcb 16A & one mcb 63A as outgoing cb

LED PROJECTOR, OPTILUX MODEL, 180W, GRAY BODY, IP 55 RESISTANT TO SUNLIGHT, 25000 LUMAN.

PENDANT LIGHTING, EXPLOSION PROOF, SUITABLE FOR ZONE 1, 11500 LUMAN, 150 WATT, EEx de IIC T4

2 WAY STREET LIGHTS WITH ASTERIA M LUMINARY, LED TYPE, 120 WATT, GRAY BODY, Luminance flux 16000, IP55, CLEAR TEMPERED GLASS. LIGHTING POLE 3M WITH JB ON DIKE WALL.

Plan

LIGHTING EQUIPMENT NUMBERING METHOD:

BD-00-DP-XX-YY-ZZ-VV

1234

1) AREA LIGHTING PANEL:

BD-00-DP-01: AREA LIGHTING PANEL 01

BD-00-DP-02: AREA LIGHTING PANEL 02

BD-00-DP-03: AREA LIGHTING PANEL 03

2) FEEDER SERIAL NUMBER

3) TYPE OF LIGHTING

HB: HIGH BAY

SL: STREET LIGHTING

FL: FLOOD LIGHT (PROJECTOR)

LF: FLUORESCENT LIGHT (OR SIMILAR LUMINARY)

4) EQUIPMENT SERIAL NO.

LIGHTING FIXTURE FOUNDATION MOUNTED DIKE WALL

04

04/08/25

A.MADHIAN

R.RAZMI

R.RAZMI

APPROVE FOR CONSTRUCTION

03

04/08/14

A.MADHIAN

R.RAZMI

R.RAZMI

APPROVE FOR CONSTRUCTION

02

04/07/23

A.MADHIAN

R.RAZMI

R.RAZMI

ISSUED FOR APPROVAL

01

04/05/27

A.MADHIAN

R.RAZMI

R.RAZMI

ISSUED FOR COMMENT

00

03/12/12

A.MADHIAN

R.RAZMI

R.RAZMI

ISSUED FOR COMMENT

REV.

DATE

DESIGN

DRAWN

CHECK

APP.

DESCRIPTION

CLIENT

OWNER:

CONSULTANT:

SUPER VISOR:

P.M.O

پارس

پارس

BEHIN TARH PAYDAR (BTP CO.)

تدوین ساحل پارس

پارس

SCALE: NTS

SIZE:A3

PROJ. NO.:

1402-T-13800

PREPARED BY: A.MADHIAN

TITLE: AREA LIGHTING AND SMALL POWER LAYOUT

APPROVED BY: R.RAZMI

CONT. No.

REF.

PROJ.

PH.

DISC.

TYPE.

SEQ.

REV.

SHEET NO.

12S/13800

POT

150

DE

EL

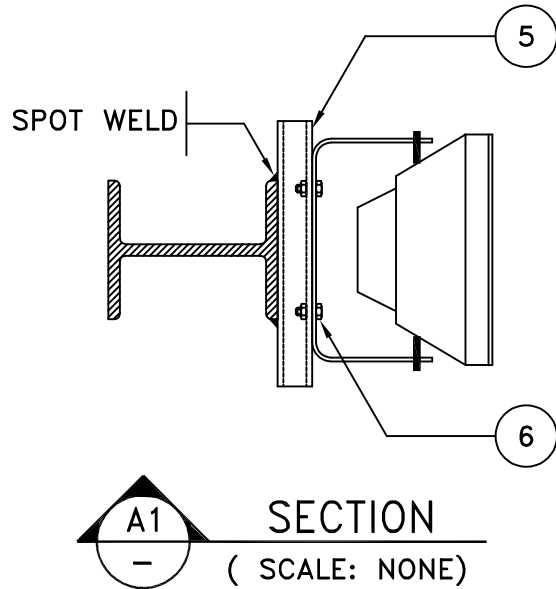
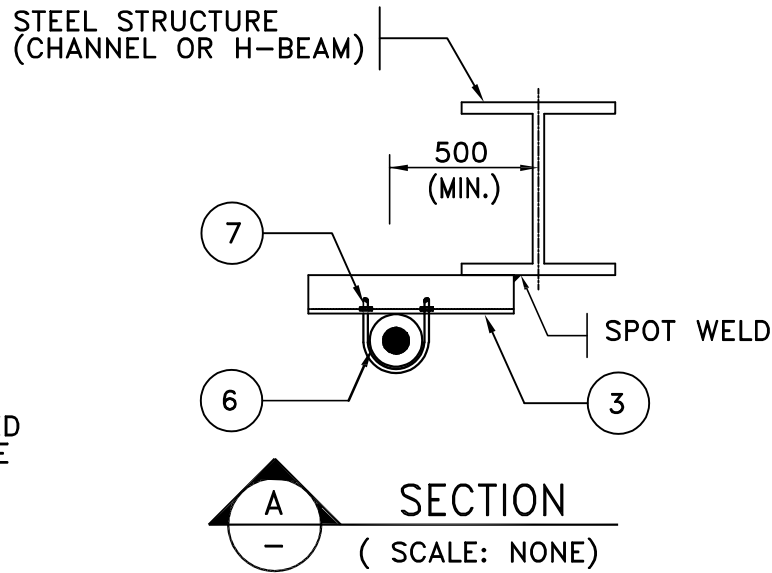
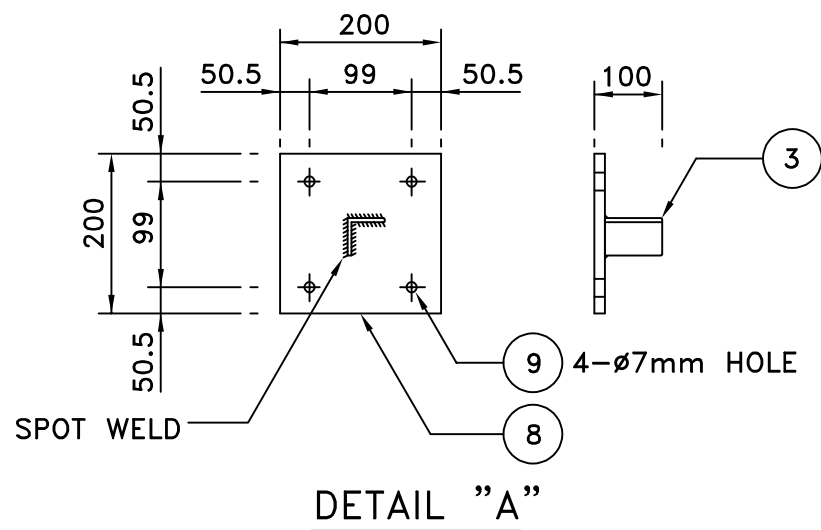
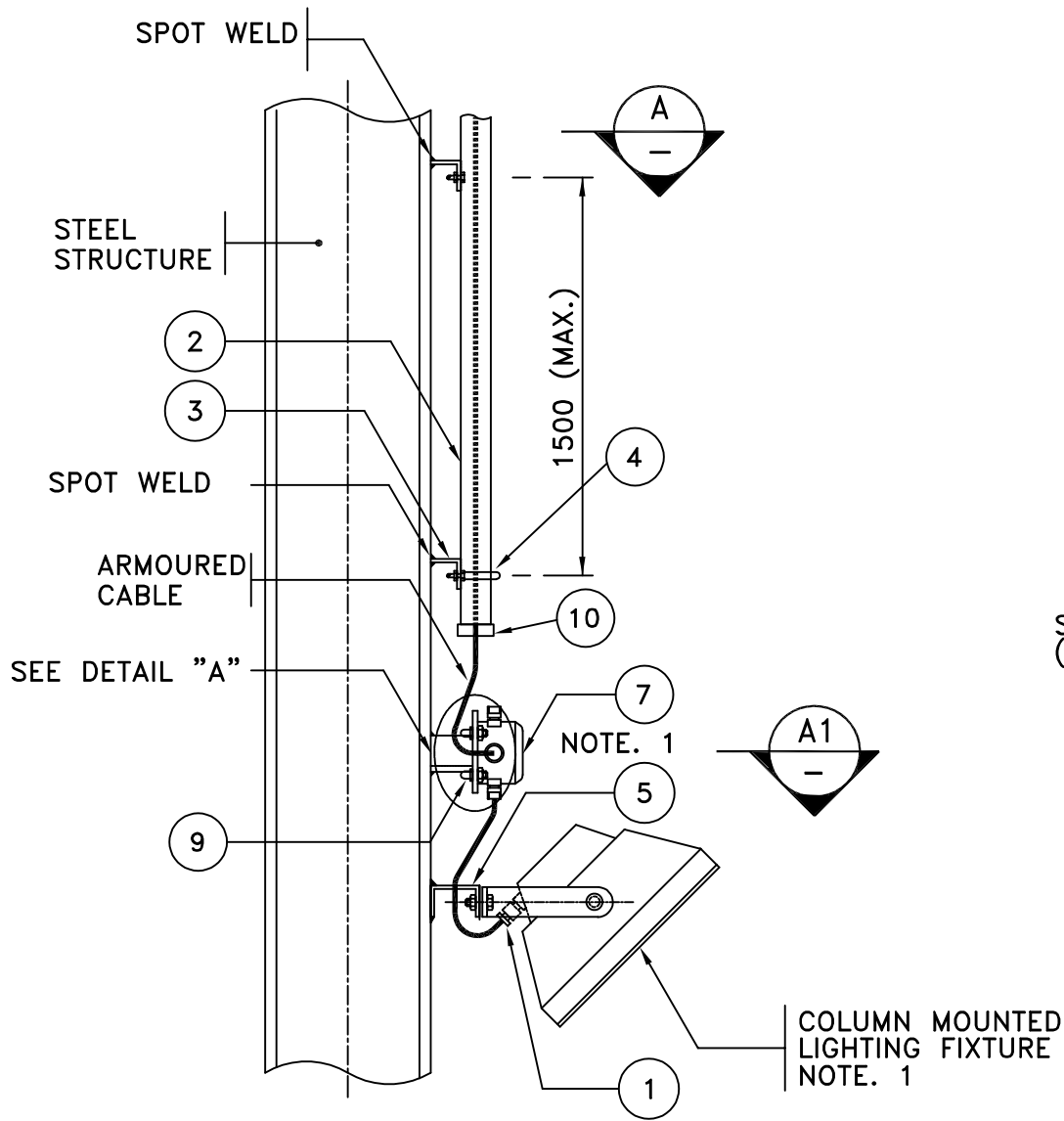
PPL

3116

04

07 OF 12

123456789101112



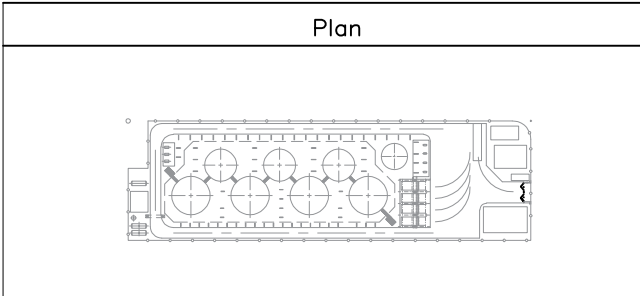
BILL OF MATERIAL				
NO.	UNIT	Q'TY	DESCRIPTION	REMARK
1	EA	4	CABLE GLAND, EARTH TAG & SHROUD	
2	m	AS REQ'D	HOT DIP GALVANIZED STEEL CONDUIT	
3	m	AS REQ'D	STEEL ANGLE L50x50x5THK	
4	EA	AS REQ'D	U BOLT,NUT, FLAT &SPRING WASHER	
5	m	AS REQ'D	STEEL CHANNEL C100x50x50x5THK	
6	EA	2	HEX HEAD BOLT M10, WITH NUT/ FLAT WASHER / LOCK WASHER, SUS	
7	EA	1	SQUARE TYPE JUNCTION BOX	
8	EA	1	PLATE, CARBON STEEL 200x200x6THK	
9	EA	4	STAINLESS STEEL, M6x25L HEX HEAD BOLT, NUT W/WASHER	
10	EA	AS REQ'D	CONDUIT HEAD BUSHING	

NOTE  
1.SELECTION OF ELECTRICAL MATERIAL IN ZONE 1 OR 2.  
- LIGHTING FIXTURE : Ex d  
- JUNCTION BOX : Ex d or e

- NOTES
- 1) HEIGHT OF STREET LIGHTS SHALL BE 8m, ACCORDING TO LIGHTING CALCULATION.
  - 2) HEIGHT OF LIGHTING TOWER SHALL BE 20 m, ACCORDING TO LIGHTING CALCULATION.
  - 3) ELEVATION OF LUMINARIES ON BUILDING WALL ARE APPROXIMATE AND SHALL BE FINALIZED AT SITE.
  - 4) AREA LIGHTING CABLES SHALL BE RUN ON CABLE LADDER WHERE POSSIBLE.
  - 5) IN SITUATION WHERE CABLE LADDER CANNOT USE FOR CABLING, THE CABLES LIGHTING SHALL BE BURIED DIRECTLY GROUND WITH PVC CONDUIT.
  - 6) DEPTH OF DIRECT BURIED CABLES SHALL BE 100 CM FFL.

REFERENCE DOCUMENT	
1-POT-150-DE-EL-CAL-3127	- AREA LIGHTING CALCULATION
2-POT-150-BE-GE-PPL-1003	- GENERAL SITE PLAN

SYMBOL & LEGEND	
	ONE WAY STREET LIGHT WITH HELIUS L LUMINARY, LED TYPE, 250 WATT, GRAY BODY, Luminance flux 31000, IP55, CLEAR TEMPERED GLASS. LIGHTING POLE 8M WITH JB.
	LIGHTING TOWER WITH 20 M HEIGHT, EQUIPPED WITH 8 LED PROJECTOR, OPTILUX MODEL, 180WATT, GRAY BODY, IP 55, 25000 LUMEN.
	JUNCTION BOX, ALUMINUM DIE CAST
	EXPLOSION PROOF
	LED TYPE 38 WATT, DUST & MOISTURE PROOF LUMINAIRE, IP 55 RESISTANT TO SUNLIGHT, STAINLESS STEEL BODY.
	2x36 WATT, FLUORESCENT LAMP, EXPLOSION PROOF TYPE.
	Service box, two 1ph sockets with16A, one 3ph socket with 63A 63 A MCB as an incoming cb & two mcb 16A & one mcb 63A as outgoing cb
	LED PROJECTOR, OPTILUX MODEL, 180W, GRAY BODY, IP 55 RESISTANT TO SUNLIGHT, 25000 LUMAN.
	PENDANT LIGHTING, EXPLOSION PROOF, SUITABLE FOR ZONE 1, 11500 LUMAN, 150 WATT, EEx de IIC T4
	2 WAY STREET LIGHTS WITH ASTERIA M LUMINARY, LED TYPE, 120 WATT, GRAY BODY, Luminance flux 16000, IP55, CLEAR TEMPERED GLASS. LIGHTING POLE 3M WITH JB ON DIKE WALL.



04	04/08/25	A.MADHIAN		R.RAZMI	R.RAZMI	APPROVE FOR CONSTRUCTION		
03	04/08/14	A.MADHIAN		R.RAZMI	R.RAZMI	APPROVE FOR CONSTRUCTION		
02	04/07/23	A.MADHIAN		R.RAZMI	R.RAZMI	ISSUED FOR APPROVAL		
01	04/05/27	A.MADHIAN		R.RAZMI	R.RAZMI	ISSUED FOR COMMENT		
00	03/12/12	A.MADHIAN		R.RAZMI	R.RAZMI	ISSUED FOR COMMENT		
REV.	DATE	DESIGN	DRAWN	CHECK	APP.	DESCRIPTION		
CLIENT			OWNER:		CONSULTANT:		SUPER VISOR:	
								
SCALE: NTS			SIZE:A3		PROJ. NO.:		1402-T-13800	
PROJ:								
PAYA OIL PRODUCT TERMINAL IN SHAHID RAJAEI PORT								
PREPARED BY:			TITLE:					
A.MADHIAN			AREA LIGHTING AND SMALL POWER LAYOUT					
APPROVED BY:								
R.RAZMI								
CONT. No.	REF.	PROJ.	PH.	DISC.	TYPE.	SEQ.	REV.	SHEET NO.
12S/13800	POT	150	DE	EL	PPL	3116	04	08 OF 12

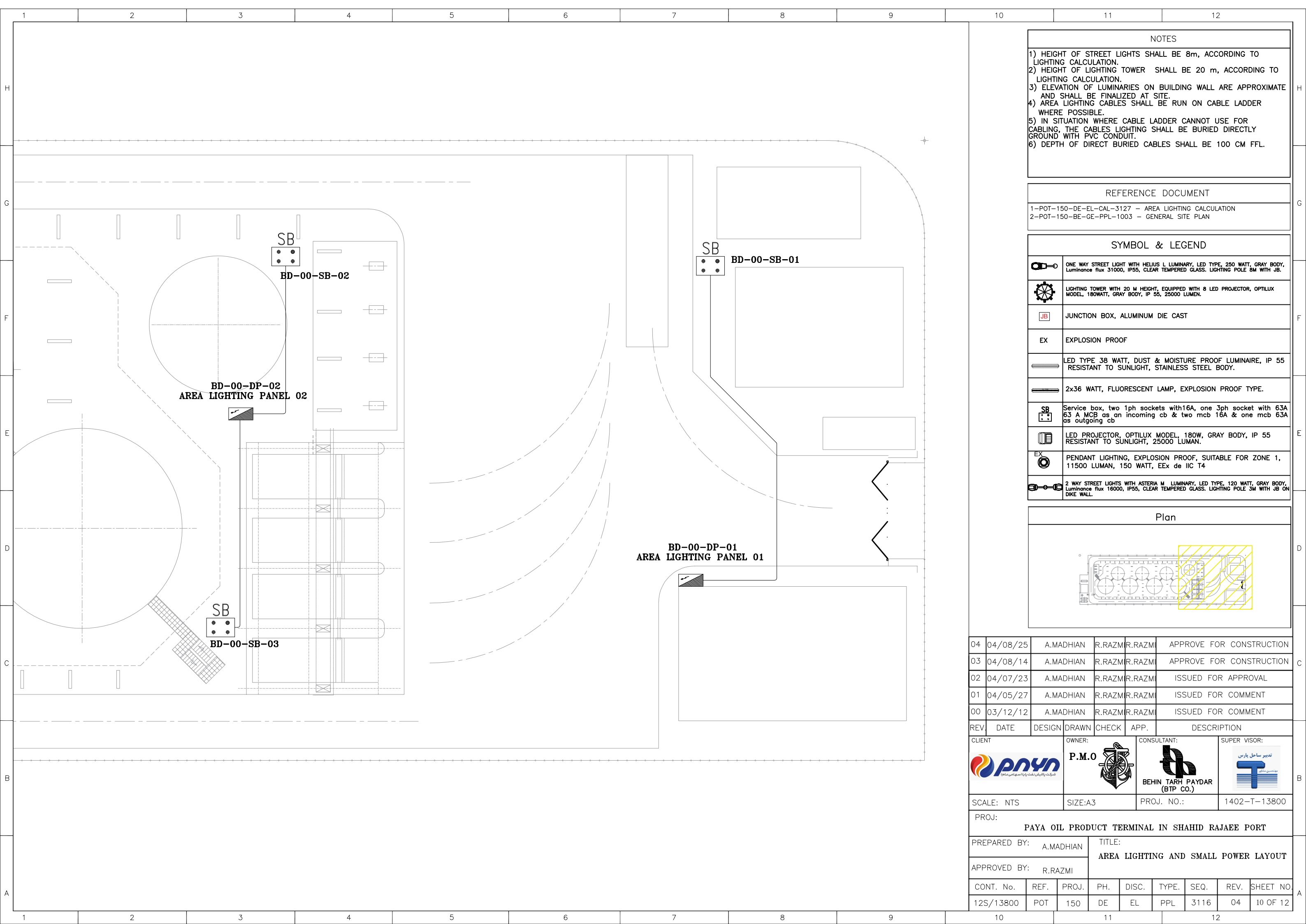
FLOOD LIGHTING FIXTURE COLUMN MOUNTED STEEL STRUCTURE





# Plan

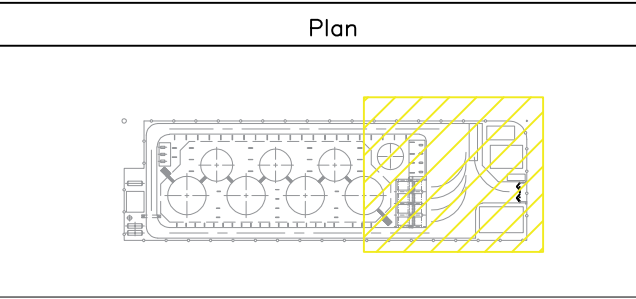
04	04/08/25	A.MADHIAN	R.RAZMI	R.RAZMI	APPROVE FOR CONSTRUCTION			
03	04/08/14	A.MADHIAN	R.RAZMI	R.RAZMI	APPROVE FOR CONSTRUCTION			
02	04/07/23	A.MADHIAN	R.RAZMI	R.RAZMI	ISSUED FOR APPROVAL			
01	04/05/27	A.MADHIAN	R.RAZMI	R.RAZMI	ISSUED FOR COMMENT			
00	03/12/12	A.MADHIAN	R.RAZMI	R.RAZMI	ISSUED FOR COMMENT			
REV.	DATE	DESIGN	DRAWN	CHECK	APP.	DESCRIPTION		
CLIENT			OWNER:		CONSULTANT:		SUPER VISOR:	
								
SCALE: NTS			SIZE:A3		PROJ. NO.:		1402-T-13800	
PROJ:								
PAYA OIL PRODUCT TERMINAL IN SHAHID RAJAEI PORT								
PREPARED BY: A.MADHIAN			TITLE: AREA LIGHTING AND SMALL POWER LAYOUT					
APPROVED BY: R.RAZMI								
CONT. No.	REF.	PROJ.	PH.	DISC.	TYPE.	SEQ.	REV.	SHEET NO.
12S/13800	POT	150	DE	EL	PPL	3116	04	09 OF 12



NOTES
1) HEIGHT OF STREET LIGHTS SHALL BE 8m, ACCORDING TO LIGHTING CALCULATION. 2) HEIGHT OF LIGHTING TOWER SHALL BE 20 m, ACCORDING TO LIGHTING CALCULATION. 3) ELEVATION OF LUMINARIES ON BUILDING WALL ARE APPROXIMATE AND SHALL BE FINALIZED AT SITE. 4) AREA LIGHTING CABLES SHALL BE RUN ON CABLE LADDER WHERE POSSIBLE. 5) IN SITUATION WHERE CABLE LADDER CANNOT USE FOR CABLING, THE CABLES LIGHTING SHALL BE BURIED DIRECTLY GROUND WITH PVC CONDUIT. 6) DEPTH OF DIRECT BURIED CABLES SHALL BE 100 CM FFL.

REFERENCE DOCUMENT
1-POT-150-DE-EL-CAL-3127 - AREA LIGHTING CALCULATION 2-POT-150-BE-GE-PPL-1003 - GENERAL SITE PLAN

SYMBOL & LEGEND	
	ONE WAY STREET LIGHT WITH HELIUS L LUMINARY, LED TYPE, 250 WATT, GRAY BODY, Luminance flux 31000, IP55, CLEAR TEMPERED GLASS. LIGHTING POLE 8M WITH JB.
	LIGHTING TOWER WITH 20 M HEIGHT, EQUIPPED WITH 8 LED PROJECTOR, OPTILUX MODEL, 180WATT, GRAY BODY, IP 55, 25000 LUMEN.
	JUNCTION BOX, ALUMINUM DIE CAST
	EXPLOSION PROOF
	LED TYPE 38 WATT, DUST & MOISTURE PROOF LUMINAIRE, IP 55 RESISTANT TO SUNLIGHT, STAINLESS STEEL BODY.
	2x36 WATT, FLUORESCENT LAMP, EXPLOSION PROOF TYPE.
	Service box, two 1ph sockets with16A, one 3ph socket with 63A 63 A MCB as an incoming cb & two mcb 16A & one mcb 63A as outgoing cb
	LED PROJECTOR, OPTILUX MODEL, 180W, GRAY BODY, IP 55 RESISTANT TO SUNLIGHT, 25000 LUMAN.
	PENDANT LIGHTING, EXPLOSION PROOF, SUITABLE FOR ZONE 1, 11500 LUMAN, 150 WATT, EEx de IIC T4
	2 WAY STREET LIGHTS WITH ASTERIA M LUMINARY, LED TYPE, 120 WATT, GRAY BODY, Luminance flux 16000, IP55, CLEAR TEMPERED GLASS. LIGHTING POLE 3M WITH JB ON DIKE WALL.



04	04/08/25	A.MADHIAN	R.RAZMI	R.RAZMI	APPROVE FOR CONSTRUCTION	
03	04/08/14	A.MADHIAN	R.RAZMI	R.RAZMI	APPROVE FOR CONSTRUCTION	
02	04/07/23	A.MADHIAN	R.RAZMI	R.RAZMI	ISSUED FOR APPROVAL	
01	04/05/27	A.MADHIAN	R.RAZMI	R.RAZMI	ISSUED FOR COMMENT	
00	03/12/12	A.MADHIAN	R.RAZMI	R.RAZMI	ISSUED FOR COMMENT	
REV.	DATE	DESIGN	DRAWN	CHECK	APP.	DESCRIPTION

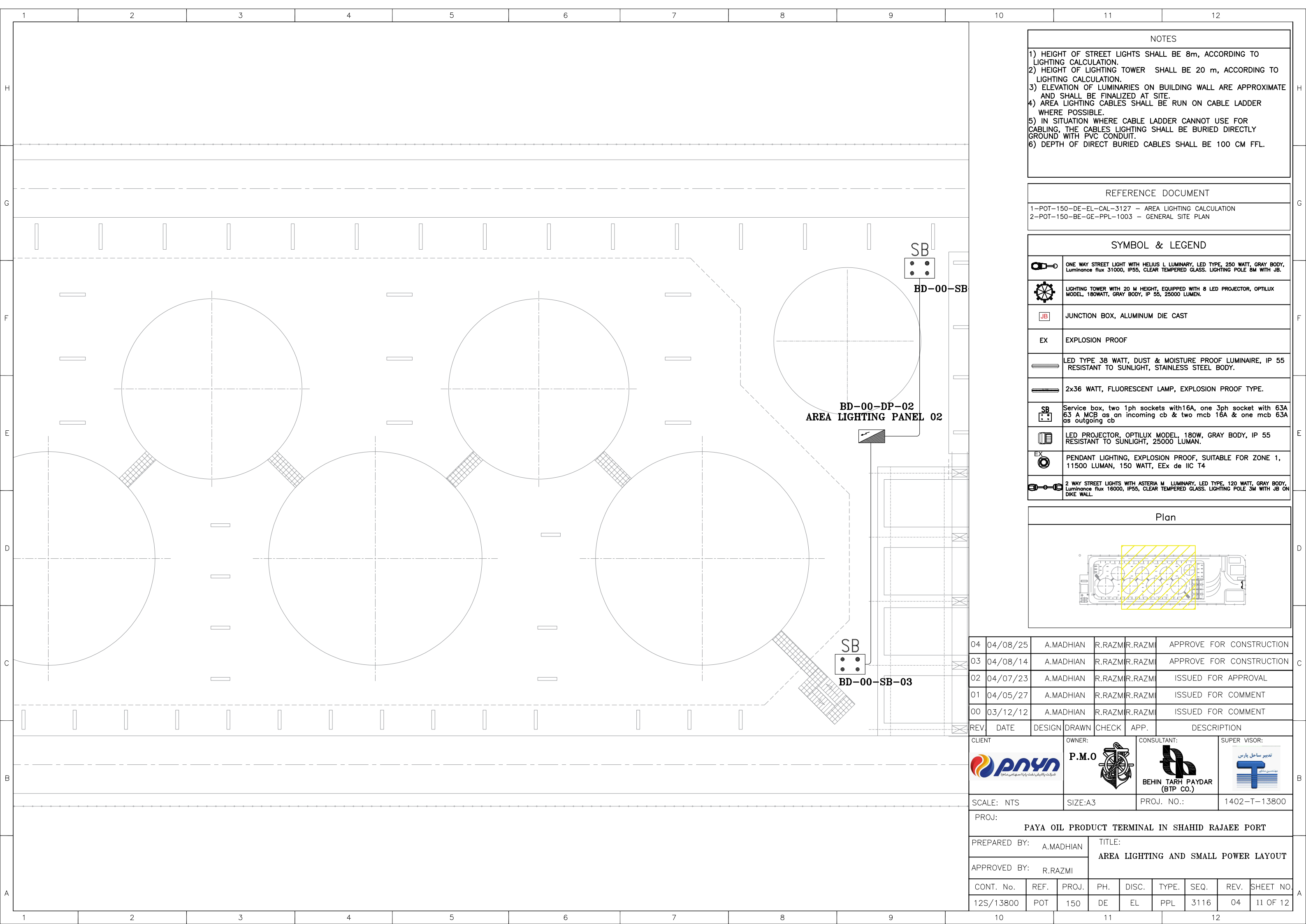
CLIENT	OWNER:	CONSULTANT:	SUPER VISOR:

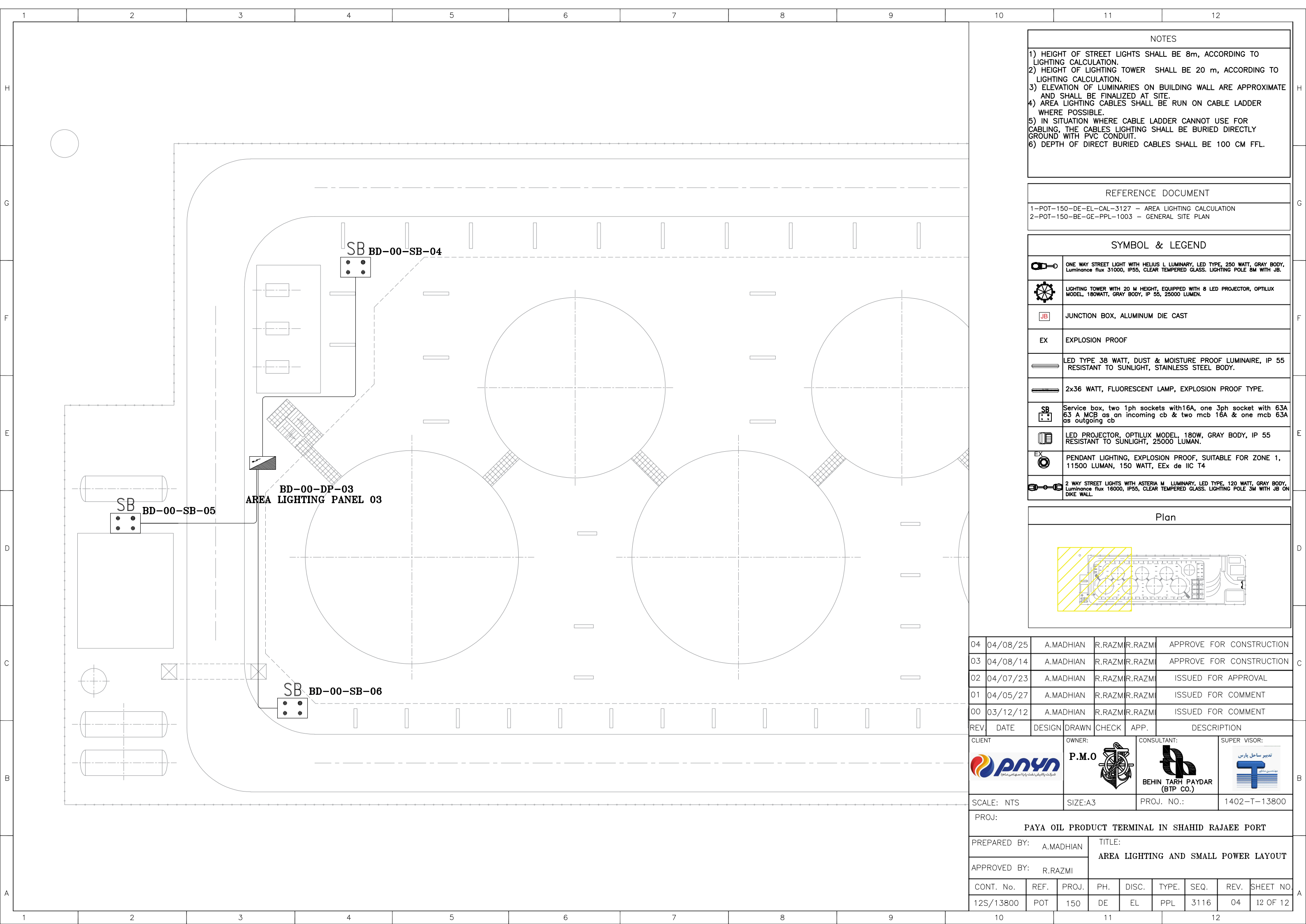
SCALE: NTS	SIZE:A3	PROJ. NO.:	1402-T-13800
------------	---------	------------	--------------

PROJ:	PAYA OIL PRODUCT TERMINAL IN SHAHID RAJAEI PORT
-------	---

PREPARED BY:	A.MADHIAN	TITLE:	AREA LIGHTING AND SMALL POWER LAYOUT
APPROVED BY:	R.RAZMI		

CONT. No.	REF.	PROJ.	PH.	DISC.	TYPE.	SEQ.	REV.	SHEET NO.
12S/13800	POT	150	DE	EL	PPL	3116	04	10 OF 12

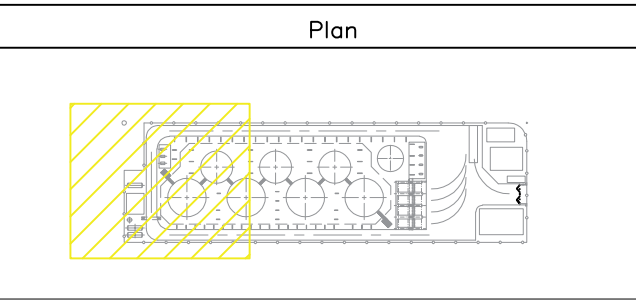




NOTES
1) HEIGHT OF STREET LIGHTS SHALL BE 8m, ACCORDING TO LIGHTING CALCULATION. 2) HEIGHT OF LIGHTING TOWER SHALL BE 20 m, ACCORDING TO LIGHTING CALCULATION. 3) ELEVATION OF LUMINARIES ON BUILDING WALL ARE APPROXIMATE AND SHALL BE FINALIZED AT SITE. 4) AREA LIGHTING CABLES SHALL BE RUN ON CABLE LADDER WHERE POSSIBLE. 5) IN SITUATION WHERE CABLE LADDER CANNOT USE FOR CABLING, THE CABLES LIGHTING SHALL BE BURIED DIRECTLY GROUND WITH PVC CONDUIT. 6) DEPTH OF DIRECT BURIED CABLES SHALL BE 100 CM FFL.

REFERENCE DOCUMENT
1-POT-150-DE-EL-CAL-3127 - AREA LIGHTING CALCULATION 2-POT-150-BE-GE-PPL-1003 - GENERAL SITE PLAN

SYMBOL & LEGEND	
	ONE WAY STREET LIGHT WITH HELIUS L LUMINARY, LED TYPE, 250 WATT, GRAY BODY, Luminance flux 31000, IP55, CLEAR TEMPERED GLASS. LIGHTING POLE 8M WITH JB.
	LIGHTING TOWER WITH 20 M HEIGHT, EQUIPPED WITH 8 LED PROJECTOR, OPTILUX MODEL, 180WATT, GRAY BODY, IP 55, 25000 LUMEN.
	JUNCTION BOX, ALUMINUM DIE CAST
	EXPLOSION PROOF
	LED TYPE 38 WATT, DUST & MOISTURE PROOF LUMINAIRE, IP 55 RESISTANT TO SUNLIGHT, STAINLESS STEEL BODY.
	2x36 WATT, FLUORESCENT LAMP, EXPLOSION PROOF TYPE.
	Service box, two 1ph sockets with16A, one 3ph socket with 63A 63 A MCB as an incoming cb & two mcb 16A & one mcb 63A as outgoing cb
	LED PROJECTOR, OPTILUX MODEL, 180W, GRAY BODY, IP 55 RESISTANT TO SUNLIGHT, 25000 LUMAN.
	PENDANT LIGHTING, EXPLOSION PROOF, SUITABLE FOR ZONE 1, 11500 LUMAN, 150 WATT, EEx de IIC T4
	2 WAY STREET LIGHTS WITH ASTERIA M LUMINARY, LED TYPE, 120 WATT, GRAY BODY, Luminance flux 16000, IP55, CLEAR TEMPERED GLASS. LIGHTING POLE 3M WITH JB ON DIKE WALL.



04	04/08/25	A.MADHIAN	R.RAZMI	R.RAZMI	APPROVE FOR CONSTRUCTION
03	04/08/14	A.MADHIAN	R.RAZMI	R.RAZMI	APPROVE FOR CONSTRUCTION
02	04/07/23	A.MADHIAN	R.RAZMI	R.RAZMI	ISSUED FOR APPROVAL
01	04/05/27	A.MADHIAN	R.RAZMI	R.RAZMI	ISSUED FOR COMMENT
00	03/12/12	A.MADHIAN	R.RAZMI	R.RAZMI	ISSUED FOR COMMENT

REV.	DATE	DESIGN	DRAWN	CHECK	APP.	DESCRIPTION
CLIENT		OWNER:		CONSULTANT:		SUPER VISOR:
SCALE: NTS		SIZE:A3		PROJ. NO.:		1402-T-13800

PROJ:						
PAYA OIL PRODUCT TERMINAL IN SHAHID RAJAEI PORT						

PREPARED BY:			TITLE:			
A.MADHIAN			AREA LIGHTING AND SMALL POWER LAYOUT			
APPROVED BY:			R.RAZMI			

CONT. No.	REF.	PROJ.	PH.	DISC.	TYPE.	SEQ.	REV.	SHEET NO.
12S/13800	POT	150	DE	EL	PPL	3116	04	12 OF 12